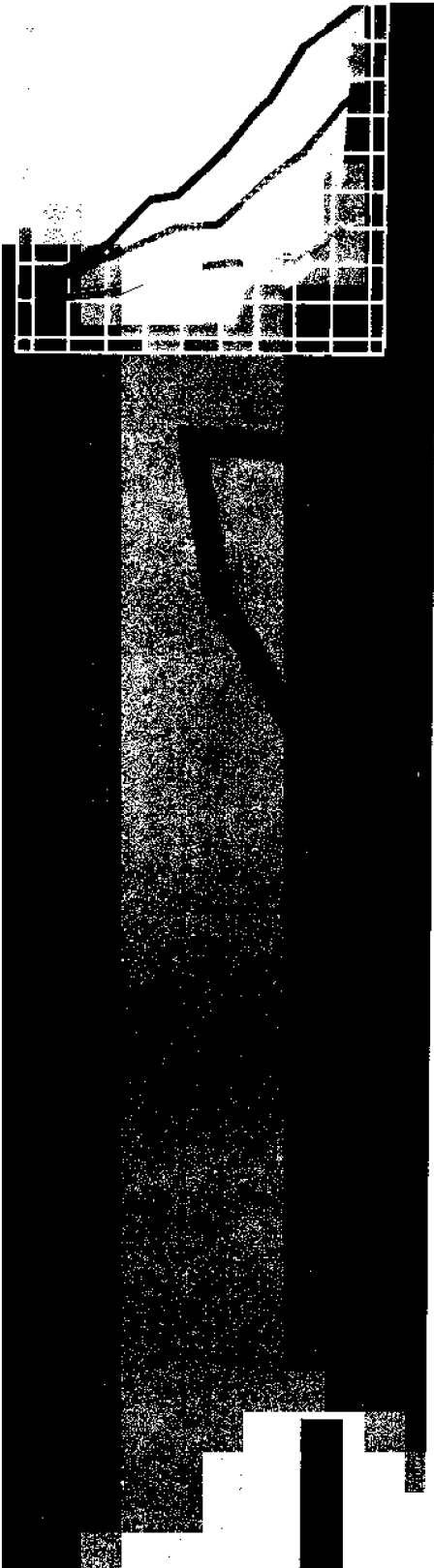


**Australian
Bureau of
Statistics**

TASMANIAN

STATISTICAL INDICATORS

November 1994





TASMANIAN

STATISTICAL INDICATORS

November 1994

William P. McReynolds
Deputy Commonwealth Statistician and
Statistician of the State of Tasmania



CONTENTS

Page

Commentary	i
-----------------------------	---

Table

Population and vital statistics

1 Population	1
2 Births, deaths and marriages registered	1

Employment and unemployment

3 Labour force status—seasonally adjusted and trend series	2
4 Labour force status by region and Tasmania, males	3
5 Labour force status by region and Tasmania, females	4
6 Labour force status by region and Tasmania, persons	5
7 Teenage labour market	6
8 Employed persons by occupation	7
9 Employed wage and salary earners, sector and industry	8
10 Average hours worked	9
11 Job vacancies	9
12 Industrial disputes	9

Wages and prices

13 Average weekly earnings of employees	10
14 Award rates of pay indexes	10
15 Summary of annual movements in wages and prices	11
16 Consumer price index: house price index numbers	11
17 Consumer price index	12
18 Price index of materials used in building other than house building	13, 14

Production

19 Miscellaneous indicators of production (production of selected commodities)	15
20 Livestock slaughtering, numbers	16
21 Livestock slaughtering—seasonally adjusted and trend series	16
22 Meat production, Tasmania	17
23 Principal mineral concentrates produced	17
24 Sawmills and plywood mills: logs delivered and timber produced	18
25 Chipping and grinding of wood	18
26 Logs delivered for milling or chipping	18

Building

27 Building approvals	19
28 Dwelling commencements	19

Finance

29 Banking statistics	20
30 Private new capital expenditure by type of asset	20

Tourism

31 Passenger arrivals and departures	21
32 Passenger arrivals by air and sea into Tasmania	21
33 Accommodation statistics	22

Transport and trade

34 Registrations of new motor vehicles	23
35 Turnover of retail establishments at current prices	23

Major Statistical Indicators

36 Australian and State figures	24
---	----

ENQUIRIES

For further information, contact the Information Officer on (002) 20 5800 or write to the Deputy Commonwealth Statistician, GPO Box 66A, Hobart, 7001 (1st floor, 175 Collins Street, Hobart).

Publications issued by the Tasmanian Office during October 1994

<i>Catalogue number</i>	<i>Publication</i>	<i>Date of release</i>
8731.6	Building Approvals, Tasmania, August 1994	12/10/94
8741.6	Dwelling Unit Commencements, Tasmania, July 1994	7/10/94
9303.6	Motor Vehicle Registrations, Tasmania, August 1994	6/10/94
1303.6	Statistical Indicators, Tasmania, October 1994	6/10/94

Symbols and other usages

The following standard symbols are used in publications of the Tasmanian Office of the Bureau:

ASIC	Australian Standard Industrial Classification
M	males
F	females
P	persons
n.a.	not available
n.e.c.	not elsewhere classified
n.e.i.	not elsewhere included
n.p.	not available for separate publication, but included in totals where applicable
n.y.a.	not yet available
p	preliminary — figure or series subject to revision
r	figure or series revised since previous issue
s	subject to sampling variability too high for most practical purposes
..	not applicable
—	nil or rounded to zero
—	break in continuity of series (where a line is drawn between two consecutive figures in the same column, or alongside two or more figures in consecutive columns)
(M)	Municipality
(C)	City

Where figures have been rounded, discrepancies may occur between sums of the component items and totals.

Values are shown in Australian currency.

Commentary

Definitions

Trend series estimates are used to "smooth" data to enable longer term trends to become more noticeable. They are the preferred series to use when making a comparison over time, eg. 12 months.

Original series estimates (or unadjusted estimates) are the survey data as collected, generalised to the relevant population. These estimates have not been seasonally adjusted or trend adjusted ("smoothed").

Employment

States' trend series figures —

The Australian and State *trend series* comparisons, shown on page 24, indicate that there was an increase of 1.9 per cent in Tasmania's employment over the year to September 1994. The largest percentage increase in employment was in Queensland (5.5 per cent). The next highest increase in employment was in Western Australia (3.7 per cent), followed by NSW (3.5 per cent) and Victoria (3.0 per cent). South Australia had an increase in employment of 2.2 per cent.

Regional Tasmania's original series figures —

In the Hobart and Southern Statistical Division the estimate of *unadjusted* employment increased by 4000 between September 1993 and September 1994 to 98 200. The estimate of employment in the Mersey-Lyell Statistical Division was 43 900 in September 1994, an increase of 1500 on the figure for September 1993. Employment in the Northern Statistical Division decreased by 1500 between September 1993 and September 1994 to 53 800.

(See tables 3-8, pages 2-7.)

Unemployment

Tasmania's trend series figures —

The Tasmanian provisional *trend series* estimate of 22 700 unemployed persons in September 1994 was a decrease of 5500 on the figure for September 1993 of 28 200. The estimate of the unemployment rate of 10.4 per cent in September 1994 was a decrease compared to the estimate of the unemployment rate of 12.8 per cent in September 1993.

The labour force

Tasmania's trend series figures —

In September 1994 there was an *unadjusted* estimate of 366 200 civilian Tasmanians aged 15 or more. There were an estimated 217 500 persons (based on *trend series* estimates) in the labour force. The estimate of the labour force participation rate in September 1994 was 59.4 per cent, compared with the figure of 60.2 per cent in September 1993.

For males, the estimate of the participation rate was 70.4 per cent, compared with 71.1 per cent for September 1993. For females, the estimate of the participation rate was 48.8 per cent (compared with 49.6 per cent in September 1993).

(See tables 3-8, pages 2-7.)

Employed wage and salary earners

In March 1994 there were approximately 142 500 employed wage and salary earners in Tasmania. In March 1992 the figure was 144 700 employed wage and salary earners.

In February 1994 the Tasmanian public sector accounted for 31.7 per cent of all employed wage and salary earners. Overall, the category Community services had the highest industry representation — 30.0 per cent — compared with the equivalent

figure of 24.3 per cent recorded in February 1992. The next highest industry grouping was Wholesale trade and Retail trade (19.7 per cent, compared with 19.0 per cent in February 1992) and Manufacturing (13.0 per cent, compared with 16.8 per cent in February 1992).

In February 1994, women made up 45.6 per cent of employed wage and salary earners. In February 1992, the equivalent figure was 44.0 per cent.

(See table 9, page 8.)

Award rates of pay indexes

The annual movement from August 1993 to August 1994 of weekly award rates of pay indexes for Tasmania rose by 0.8 per cent for full-time adult females and by 0.8 per cent for full-time adult males. For Australia, the figures were 1.1 per cent for females and 1.0 per cent for males.

For full-time adult female employees in Tasmania, the largest industry increases over this 12 month period occurred in Recreation, personal and other services (3.0 per cent); and Manufacturing and Wholesale and retail trade (both 2.3 per cent).

For the same period for full-time adult male employees in Tasmania, the largest industry increases occurred in Recreation, personal and other services (2.2 per cent); and Wholesale and retail trade (2.0 per cent).

The largest occupation increases over the same period for full-time adult female employees occurred in Plant and machine operators, and drivers (2.5 per cent); and Tradespersons (1.9 per cent).

For full-time adult male employees the largest occupation increases over the period occurred in Salespersons and personal service workers (1.7 per cent); and Plant and machine operators, and drivers (1.0 per cent).

(See table 14, page 10.)

Building materials prices

Prices for house building materials in Hobart rose by 3.3 per cent over the twelve-month period ending August 1994.

This increase was marginally above that for the weighted average of the six State capital cities. The lowest increase was recorded for Canberra with 1.4 per cent, and the highest in both Melbourne and Adelaide with 3.9 per cent for the twelve-month period.

Prices for materials used in other than house building increased by only 0.7 per cent in Hobart for the twelve months ending August, which was the lowest of the capital cities, while in Sydney the increase recorded was 2.5 per cent for the same period.

Greatest price movements in Hobart were for non-ferrous pipes and fittings (up 21.9 per cent), structural timber (up 10 per cent) and pre-cast concrete products (up 9.2 per cent).

Price Index of Materials Used in Other Than House Building, August 1994, ABS Catalogue No. 6407.0, released on 12 October 1994, \$11.00; and Price Index of Materials Used in House Building, August 1994, ABS Catalogue No. 6408.0, released 12 October 1994, \$8.50.

Housing finance

The trend estimate for new secured housing finance commitments entered into in Tasmania in August 1994 was 953, valued at \$61.6 million. This represented a 3.9 per

cent decrease on the number (992) and a 2.4 per cent decrease on the value (\$63.1 million) for July 1994.

These figures also represent a 5.8 per cent decrease on the number (1012) and a 3.4 per cent increase on the value (\$59.6 million) for August 1993. In comparison, the corresponding national figures showed a 1.5 per cent increase on the number and an 8.7 per cent increase on the value for August 1993.

The fall of 3.9 per cent in the August 1994 trend estimate for the number of new secured housing finance commitments in Tasmania continued the decline which began in February 1994. In comparison, the national trend estimate for August 1994 fell by 4.2 per cent continuing a decline which began in April 1994.

Housing Finance for Owner Occupation, ABS Catalogue No. 5609.0, released on 17 October 1994, \$11.00

Livestock slaughtering

The trend (this indicates the underlying direction of the series) for cattle and calves has continued downwards, while for both sheep and pigs the trend was upward.

Livestock slaughtering for cattle and calves continued its downward trend from the peak in October 1993 when a trend estimate of 18 400 were slaughtered. For August 1994 the trend series shows 15 800 cattle and calves were slaughtered. This was down 11.7 per cent on the August 1993 level of 17 900.

A high level of sheep and lambs slaughtered during recent months has pushed the trend series upwards. The trend level of 103 600 for August 1994 is 22.2 per cent above 84 800 sheep and lambs slaughtered in August 1993.

The trend for pigs slaughtered shows a peak in December 1993 and January 1994 of 8000, followed by a slight drop to May 1994 and a slight recovery in the past three months. The trend figure of 7900 pigs slaughtered in August 1994 was slightly above the level at August 1993.

(See table 21, page 16.)

Building approvals

There were 291 new dwelling units approved during August 1994 in Tasmania, a six per cent decrease on the number recorded for July 1994, and 24 per cent less than the figure recorded for August 1993 (383).

For the twelve months ended August 1994 there were 4024 new dwelling units approved, three per cent below the 4143 units recorded for the twelve months ended August 1993.

The latest monthly trend estimates for the number of dwelling units approved show ten consecutive months of decline.

The most dwelling units approved in August 1994 were in the City of Launceston, 30; followed by the Municipality of West Tamar, 27; the City of Clarence, 25; and the City of Glenorchy, 24.

The value of new residential building approved, at current prices, in August 1994 was \$23.2 million, compared with the July 1994 figure of \$20.9 million and the August 1993 figure of \$27.0 million.

The value of all buildings approved, at current prices, for August 1994 was \$38.6 million, compared with \$31.2 million in July 1994 and \$37.6 million in August 1993.
(See table 27, page 19.)

Retail

The trend estimate for turnover of retail and service establishments for August 1994, in Tasmania, was \$217.5 million, an increase of nearly four per cent on the August 1993 figure of \$209.6 million. The estimate has shown weak growth since April 1994. In the first three months of 1994 the trend estimate was in decline or showed zero growth.

The estimate of turnover for August 1994, for Australia (\$8865.5 million), was over eight per cent more than for August 1993. The trend estimate of turnover has shown strong growth of around 0.8 per cent over each of the past three months.

All States, except Tasmania, have shown moderate to strong growth over recent months.

In original terms, the estimate of retail turnover in August 1994, for Tasmania, was \$207.9 million, a decrease of over one per cent on the figure recorded for July 1994 and over nine per cent more than the figure recorded for August 1993.

(See table 35, page 23.)

New motor vehicle registrations

There were 1331 new motor vehicles (excluding motorcycles) registered in Tasmania during August 1994. This was more than 15 per cent higher than for July (1152), and an increase of more than two per cent on the number recorded for August 1993. There were 264 vehicles registered by vehicle rental businesses during August 1994.

Registrations for the twelve months ended August 1994 (12 827) were slightly less than for the twelve months ended August 1993 (12 878).

(See table 34, page 23.)

Engineering construction activity

The value of engineering construction activity commenced in Tasmania during the June quarter 1994 was \$48.7 million, an increase of nearly 10 per cent on the figure recorded for the March quarter 1994. The public sector accounted for about two-thirds of activity commenced during the June quarter 1994. For the quarter, construction activity commenced on roads, highways and subdivisions totalled \$26.2 million.

The value of engineering construction activity done in Tasmania during the June quarter was \$70.1 million. The figure for the March quarter 1994 was \$55.5 million. Nearly 70 per cent of the work done during the quarter was undertaken by the public sector.

Engineering Construction Activity, Australia, June Quarter 1994, ABS Catalogue No. 8762.0, released on 12 October 1994, \$11.00.

Table 1. Population, Tasmania

Year or quarter	Estimated resident population at end of period	Natural increase (a)	Net estimated migration gain	Total population growth	Annual growth rate (b)
	('000)	('000)	('000)	('000)	(%)
Year ended 30 June —					
1990	462.2	3.4	3.6	6.9	1.52
1991	466.8	3.3	1.2	4.6	1.01
1992 p	469.7	3.2	0.3	2.9	0.62
1993 p	471.4	3.2	- 1.5	1.8	0.37
Quarter					
1992 —					
March p	469.2	0.9	- 0.1	0.8	0.72
1993 —					
March p	471.3	0.9	- 0.3	0.5	0.44
June p	471.4	0.9	- 0.7	0.1	0.37
September	471.9	0.7	- 0.3	0.4	0.39
December	472.1	0.8	- 0.5	0.2	0.29
1994					
March p	472.2	0.9	- 0.7	0.1	0.20

(a) Excess of live births registered over deaths registered (based on usual State of residence).
(b) Percentage growth from same quarter in previous year.

Table 2. Births, deaths and marriages registered, Tasmania

Year or quarter	Births		Deaths		Infant mortality (a)		Marriages	
	No.	Rate (b)	No.	Rate (b)	Deaths	Rate (c)	No.	Rate (b)
Year ended								
31 December —								
1989	6 813	14.96	3 690	8.10	72	10.6	3 111	6.83
1990	7 043	15.25	3 713	8.04	63	8.9	3 026	6.55
1991	6 857	14.69	3 666	7.86	59	8.6	3 069	6.58
1992	6 956	14.81	3 722	7.92	42	6.0	3 081	6.56
1993 p	r 6 804	14.43	r 3 618	7.67	r 37	r 5.4	3 055	6.48
Quarter								
1991 —								
March	1 784	..	894	..	22	12.3	976	..
1993 —								
March	1 714	..	863	..	14	8.2	820	..
1993 —								
June	1 733	..	884	..	8	5.2	797	..
September	1 710	..	993	..	11	5.8	431	..
December	1 647	..	878	..	4	3.0	786	..
1994 —								
March p	1 800	..	948	..	9	5.0	914	..

(a) Registered deaths of children under one year of age. (b) Rate per 1000 of estimated mean population. (c) Rate per 1000 live births.

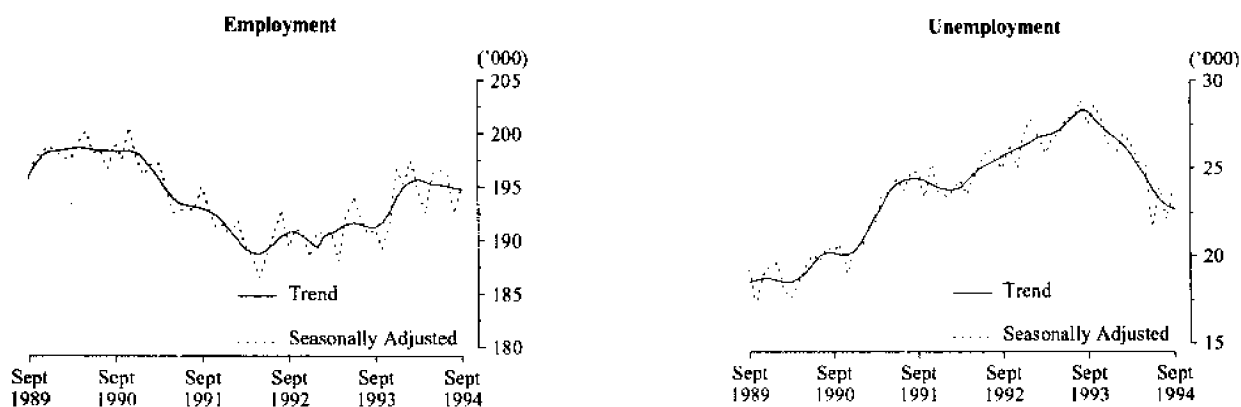
Employment and Unemployment

Table 3. Labour force status, Tasmania (a): Seasonally adjusted and trend series

Month	Seasonally adjusted series				Trend series (b)			
	Employed (^{'000})	Unem- ployed (^{'000})	Unemploy- ment rate (%)	Partici- pation rate (%)	Employed (^{'000})	Unem- ployed (^{'000})	Unemploy- ment rate (%)	Partici- pation rate (%)
MALES								
1993 -								
September	109.8	16.6	13.2	70.6	109.7	17.6	13.8	71.1
October	110.1	18.0	14.1	71.5	110.2	17.5	13.7	71.2
November	109.0	17.8	14.1	70.7	110.9	17.4	13.6	71.5
December	113.4	16.6	12.8	72.4	111.6	17.4	13.5	71.9
1994 -								
January	112.3	16.9	13.1	71.9	112.2	17.5	13.5	72.2
February	113.3	17.9	13.6	73.0	112.4	17.4	13.4	72.3
March	112.2	18.0	13.9	72.4	112.5	17.1	13.2	72.1
April	111.2	16.8	13.1	71.2	112.3	16.5	12.8	71.7
May	112.4	16.0	12.5	71.4	112.2	15.9	12.4	71.2
June	112.5	14.1	11.1	70.4	112.2	15.2	11.9	70.9
July	112.6	14.5	11.4	70.7	112.3	14.7	11.6	70.6
August	112.0	14.3	11.3	70.2	112.4	14.4	11.3	70.5
September	112.7	15.1	11.8	71.0	112.5	14.2	11.2	70.4
FEMALES								
1993 -								
September	81.3	10.9	11.8	49.7	81.5	10.5	11.5	49.6
October	79.3	10.5	11.7	48.4	81.5	10.3	11.3	49.5
November	82.2	9.9	10.8	49.6	81.8	10.0	10.9	49.5
December	83.4	9.4	10.1	49.9	82.3	9.6	10.4	49.5
1994 -								
January	83.0	9.0	9.8	49.5	82.8	9.2	10.0	49.5
February	84.2	9.1	9.8	50.2	83.1	8.9	9.7	49.5
March	82.4	8.4	9.2	48.8	83.2	8.7	9.5	49.4
April	81.5	8.7	9.6	48.4	83.2	8.6	9.4	49.3
May	83.8	9.2	9.9	50.0	83.0	8.6	9.4	49.2
June	84.1	7.5	8.2	49.2	82.9	8.5	9.3	49.1
July	83.4	9.4	10.1	49.9	82.7	8.5	9.3	49.0
August	80.6	7.8	8.8	47.5	82.5	8.5	9.4	48.9
September	82.5	8.9	9.7	49.1	82.3	8.5	9.4	48.8
TOTAL								
1993 -								
September	191.1	27.5	12.6	60.0	191.2	28.2	12.8	60.2
October	189.3	28.6	13.1	59.7	191.7	27.8	12.7	60.2
November	191.2	27.8	12.7	60.0	192.7	27.4	12.5	60.3
December	196.8	26.0	11.7	61.0	194.0	27.0	12.2	60.5
1994 -								
January	195.3	25.9	11.7	60.5	195.0	26.7	12.0	60.6
February	197.5	27.0	12.0	61.4	195.5	26.3	11.9	60.7
March	194.6	26.4	11.9	60.4	195.7	25.8	11.7	60.6
April	192.6	25.4	11.7	59.6	195.5	25.2	11.4	60.3
May	196.3	25.2	11.4	60.5	195.2	24.5	11.1	60.0
June	196.6	21.6	9.9	59.6	195.2	23.8	10.9	59.8
July	196.1	23.9	10.9	60.1	195.1	23.2	10.6	59.6
August	192.6	22.1	10.3	58.6	194.9	22.9	10.5	59.5
September	195.1	24.0	10.9	59.8	194.8	22.7	10.4	59.4

(a) For explanation of terms and concepts, refer to *The Labour Force, Australia* (Catalogue No.6203.0). (b) Trend series revised each month. Users should be aware that the latest observations may be revised substantially.

Tasmanian Labour Force



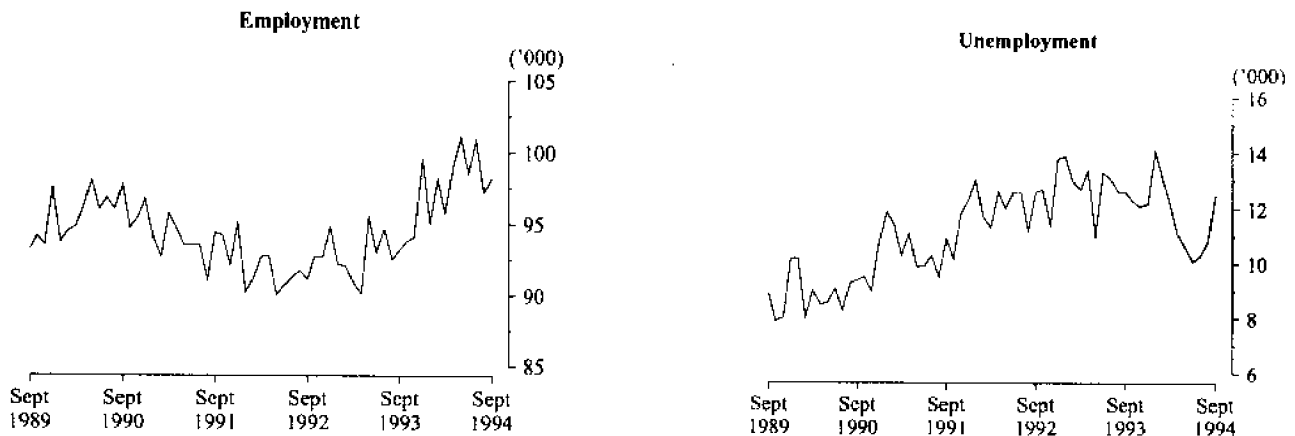
Employment and Unemployment

Table 4. Labour force status, by region and Tasmania, males (a) (b)

<i>Month</i>		<i>Total employed</i>	<i>Total unemployed</i>	<i>Unem- ployment rate</i>	<i>Partici- pation rate</i>
		('000)	('000)	(%)	(%)
HOBART AND SOUTHERN STATISTICAL DIVISIONS					
1991 -	September	54.4	6.7	11.0	72.0
1993 -	September	52.1	7.7	12.9	69.3
1994 -	July	55.3	6.0	9.8	70.1
	August	54.2	6.9	11.4	69.5
	September	54.3	7.9	12.6	70.6
NORTHERN STATISTICAL DIVISION					
1991 -	September	33.1	3.6	9.7	75.0
1993 -	September	32.8	4.5	12.1	72.2
1994 -	July	31.1	4.6	12.8	71.1
	August	30.2	4.5	13.0	69.1
	September	31.9	4.4	12.2	71.5
MERSEY-LYELL STATISTICAL DIVISION					
1991 -	September	26.8	5.6	17.2	76.1
1993 -	September	25.0	4.9	16.5	72.5
1994 -	July	26.8	3.4	11.4	71.5
	August	26.4	3.2	10.9	70.9
	September	26.6	3.3	10.9	72.6
TASMANIA					
1991 -	September	114.3	15.9	12.2	73.8
1993 -	September	109.9	17.1	13.5	70.9
1994 -	July	113.1	14.0	11.0	70.7
	August	110.8	14.7	11.7	69.7
	September	112.8	15.5	12.1	71.3

(a) For explanation of terms and concepts, refer to *The Labour Force, Australia* (Catalogue No. 6203.0). (b) Data in this table are original series, i.e. they are not part of a seasonally adjusted or a trend series. Accordingly, care should be exercised when using this data. New monthly data from each quarter (March, June, September and December) is published two months after the quarter.

Hobart and Southern Statistical Divisions - Persons



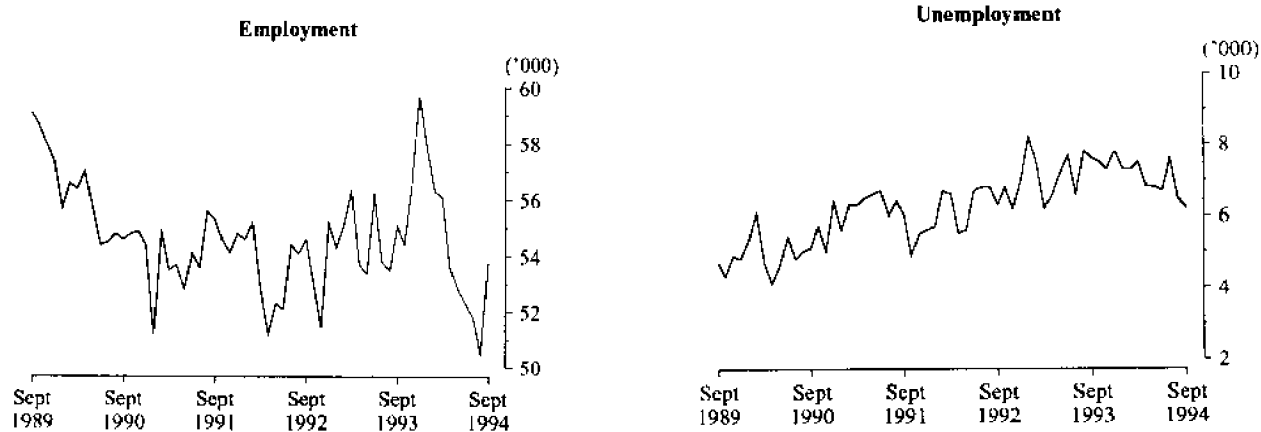
Employment and Unemployment

Table 5. Labour force status, by region and Tasmania, females (a) (b)

Month		Total employed (^{'000})	Total unemployed (^{'000})	Unemployment rate (%)	Participation rate (%)
HOBART AND SOUTHERN STATISTICAL DIVISIONS					
1991 -	September	41.1	4.3	9.4	51.5
1993 -	September	42.1	5.0	10.7	51.5
1994 -	July	45.6	4.3	8.7	53.7
	August	43.0	3.8	8.2	50.7
	September	43.9	4.6	9.5	52.0
NORTHERN STATISTICAL DIVISION					
1991 -	September	22.8	2.5	9.9	50.5
1993 -	September	22.5	3.1	12.0	48.4
1994 -	July	20.7	3.0	12.6	45.2
	August	20.3	2.0	8.9	43.1
	September	21.9	1.7	7.3	45.5
MERSEY-LYELL STATISTICAL DIVISION					
1991 -	September	19.4	2.5	11.4	48.9
1993 -	September	17.5	2.7	13.3	48.9
1994 -	July	16.5	1.8	10.0	44.8
	August	16.5	1.5	8.3	43.1
	September	17.4	2.5	12.4	48.3
TASMANIA					
1991 -	September	83.3	9.2	10.0	50.6
1993 -	September	82.0	10.8	11.6	50.0
1994 -	July	82.8	9.1	9.9	49.4
	August	79.9	7.3	8.4	46.9
	September	83.2	8.8	9.6	49.4

(a) For explanation of terms and concepts, refer to *The Labour Force, Australia* (Catalogue No. 6203.0). (b) Data in this table are original series, i.e. they are not part of a seasonally adjusted or a trend series. Accordingly, care should be exercised when using this data. New monthly data from each quarter (March, June, September and December) is published two months after the quarter.

Northern Statistical Division - Persons



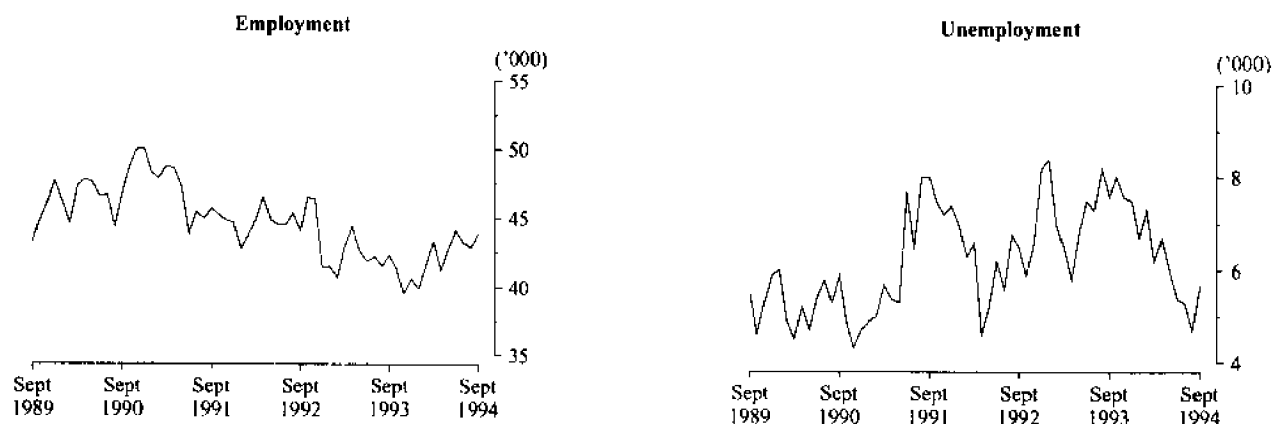
Employment and Unemployment

Table 6. Labour force status, by region and Tasmania, persons (a) (b)

Month	Total employed	Total unemployed	Unemployment rate	Participation rate
	('000)	('000)	(%)	(%)
HOBART AND SOUTHERN STATISTICAL DIVISIONS				
1991 - September	95.6	11.0	10.3	61.6
1993 - September	94.2	12.7	11.9	60.1
1994 - July	100.9	10.3	9.3	61.6
August	97.2	10.8	10.0	59.9
September	98.2	12.5	11.3	61.0
NORTHERN STATISTICAL DIVISION				
1991 - September	55.8	6.1	9.8	62.6
1993 - September	55.3	7.6	12.1	60.2
1994 - July	51.8	7.6	12.7	57.8
August	50.5	6.5	11.4	55.9
September	53.8	6.2	10.3	58.4
MERSEY-LYELL STATISTICAL DIVISION				
1991 - September	46.2	8.1	14.9	62.1
1993 - September	42.4	7.6	15.2	60.7
1994 - July	43.3	5.3	10.8	58.4
August	42.9	4.7	9.9	57.0
September	43.9	5.7	11.5	60.4
TASMANIA				
1991 - September	197.6	25.1	11.3	62.0
1993 - September	191.9	27.9	12.7	60.3
1994 - July	195.9	23.2	10.6	59.8
August	190.7	22.0	10.3	58.1
September	196.0	24.3	11.0	60.2

(a) For explanation of terms and concepts, refer to *The Labour Force, Australia* (Catalogue No. 6203.0). (b) Data in this table are original series, i.e. they are not part of a seasonally adjusted or a trend series. Accordingly, care should be exercised when using this data. New monthly data from each quarter (March, June, September and December) is published two months after the quarter.

Mersey Lyell Statistical Division - Persons



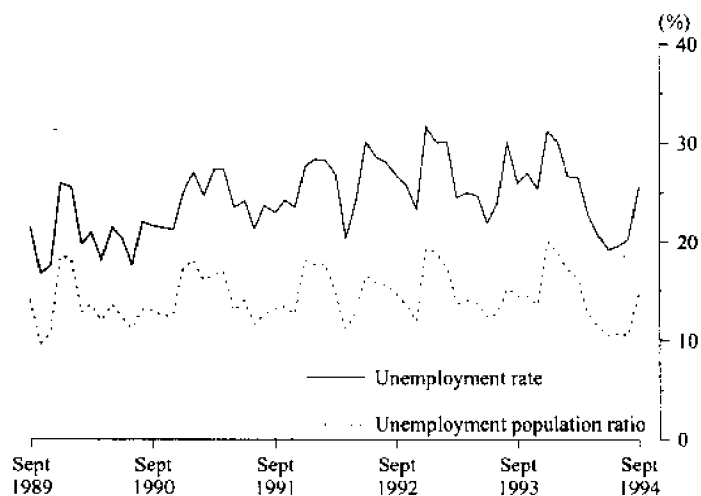
Employment and Unemployment

Table 7. Teenage labour market (a), Tasmania (b)

Month	Employed		Unemployed		Labour force	Not in labour force	Civilian population aged 15-19	Unemployment rate	Unemployment population ratio	Participation rate
	Full-time	Total	Looking for full-time work	Total						
	('000)	('000)	('000)	('000)						
ATTENDING NEITHER SCHOOL NOR A TERTIARY INSTITUTION FULL TIME										
1991 - September	8.7	10.6	3.3	3.3	14.0	0.7	14.7	23.9	22.4	95.4
1993 - September	6.5	8.7	3.4	3.5	12.2	1.6	13.8	28.8	25.4	88.5
1994 - July	7.4	9.6	2.4	2.5	12.1	1.4	13.6	20.5	18.4	89.5
August	6.9	9.3	2.5	2.7	12.0	1.6	13.7	22.8	19.7	88.0
September	6.3	8.7	3.0	3.0	11.7	1.2	12.9	25.8	23.3	90.8
ATTENDING SCHOOL OR A TERTIARY INSTITUTION FULL TIME										
1991 - September	0.2	5.1	0.7	1.4	6.5	15.0	21.5	21.5	6.5	30.2
1993 - September	0.4	5.5	0.4	1.5	7.0	13.8	20.8	21.4	7.2	33.7
1994 - July	0.5	5.7	0.3	1.2	6.9	13.7	20.6	17.4	5.8	33.5
August	..	4.9	0.2	0.9	5.8	14.7	20.5	15.5	4.4	28.3
September	0.1	5.9	0.6	2.0	7.9	13.3	21.2	25.3	9.4	37.3
TOTAL										
1991 - September	9.0	15.8	4.0	4.7	20.5	15.7	36.2	23.0	13.0	56.6
1993 - September	6.9	14.2	3.8	5.0	19.2	15.3	34.5	26.3	14.5	55.6
1994 - July	8.0	15.3	2.7	3.7	19.1	15.1	34.2	19.6	10.8	55.8
August	6.9	14.2	2.7	3.6	17.9	16.3	34.2	20.3	10.5	52.3
September	6.4	14.6	3.5	5.0	19.6	14.5	34.1	25.6	14.7	57.4

(a) Persons aged 15-19 years. (b) For explanation of terms and concepts, refer to *The Labour Force, Australia* (Catalogue No. 6203.0).

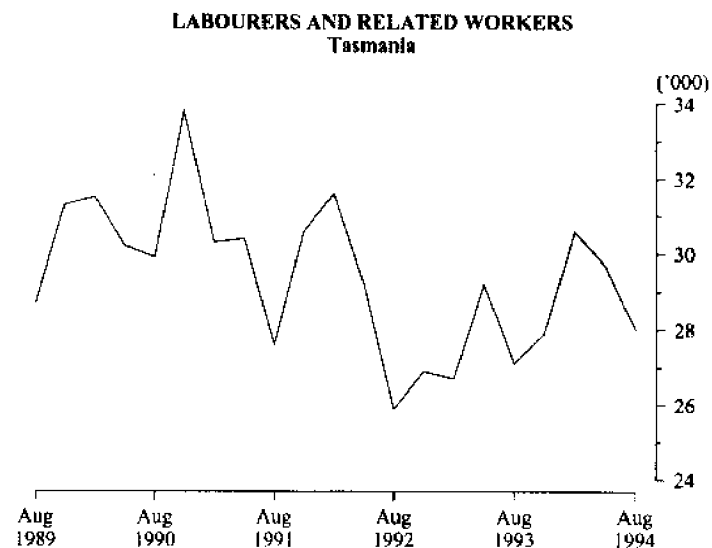
TEENAGE UNEMPLOYMENT Tasmania



Employment and Unemployment

Table 8. All employed persons, occupation, Tasmania (a)

Occupation	August 1993	August 1994			Proportion of total employed	
	Persons	Males	Females	Persons	Aug 1993	Aug 1994
	('000)	('000)	('000)	('000)	(%)	(%)
Managers and administrators	19.9	16.4	6.0	22.4	10.5	11.7
Farmers and farm managers	6.9	4.9	1.9	6.8	3.7	3.6
Managing supervisors	5.7	4.8	3.4	8.2	3.0	4.3
Other	7.3	6.7	0.7	7.4	3.9	3.9
Professionals	21.9	12.8	9.3	22.1	11.6	11.6
Building and professional engineers	1.6	1.6	0.1	1.6	0.8	0.8
Health diagnosis and treatment practitioners	2.5	0.9	0.7	1.6	1.3	0.8
School teachers	6.2	2.9	4.5	7.4	3.3	3.9
Business professionals	3.8	2.7	1.2	3.8	2.0	2.0
Other	7.8	4.7	2.8	7.7	4.1	4.0
Para-professionals	12.6	5.9	6.5	12.5	6.7	6.6
Engineering and building associates and technicians	1.7	1.1	0.2	1.3	0.9	0.7
Registered nurses	4.9	0.2	4.7	4.8	2.6	2.5
Other	6.0	4.6	1.6	6.4	3.2	3.4
Tradespersons	30.4	24.9	3.2	28.1	16.1	14.7
Metal fitting and machining tradespersons	2.5	1.9	-	1.9	1.3	1.0
Electrical and electronics tradespersons	6.1	3.9	0.1	4.0	3.2	2.1
Building tradespersons	7.6	7.1	0.1	7.2	4.0	3.8
Other	14.2	12.0	3.0	15.0	7.5	7.9
Clerks	33.6	8.7	21.3	30.1	17.8	15.8
Stenographers and typists	4.5	0.3	4.2	4.4	2.4	2.3
Receptionists, telephonists and messengers	4.7	0.2	4.3	4.6	2.5	2.4
Other	24.4	8.2	12.8	21.1	12.9	11.1
Salespersons and personal service workers	28.2	10.5	20.4	30.9	14.9	16.2
Sales representatives	2.5	1.9	0.5	2.3	1.3	1.2
Sales assistants	12.2	4.8	9.7	14.5	6.5	7.6
Other	13.5	3.8	10.2	14.1	7.2	7.4
Plant and machine operators, and drivers	15.1	13.8	2.8	16.6	8.0	8.7
Road and rail transport drivers	5.6	5.9	0.4	6.3	3.0	3.3
Machine operators	4.2	3.0	2.3	5.3	2.2	2.8
Other	5.3	4.9	0.1	5.0	2.8	2.6
Labourers and related workers	27.1	17.6	10.4	28.0	14.4	14.7
Trades assistants and factory hands	4.9	3.5	1.1	4.6	2.6	2.4
Agricultural labourers and related workers	6.1	4.4	1.4	5.8	3.2	3.0
Cleaners	5.8	2.3	4.3	6.5	3.1	3.4
Construction and mining labourers	1.8	1.6	-	1.6	1.0	0.8
Other	8.4	5.9	3.5	9.5	4.4	5.0
Total employed	188.8	110.6	79.9	190.7	100.0	100.0

(a) For explanation of terms and concepts, refer to *The Labour Force, Australia* (Catalogue No. 6203.0).

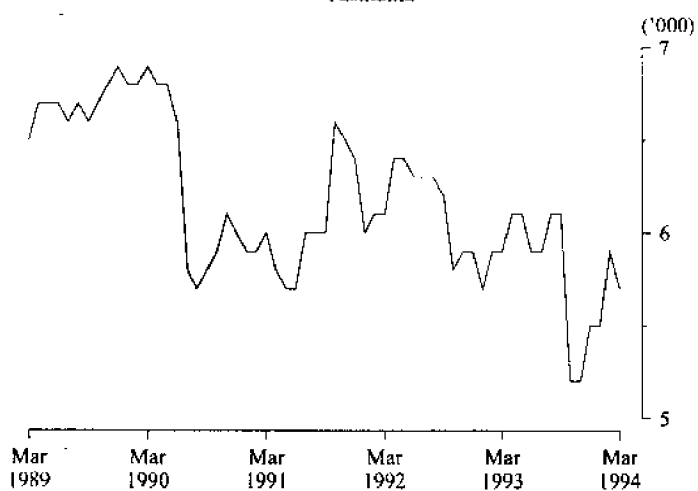
Employment and Unemployment

Table 9. Employed wage and salary earners, sector and industry, Tasmania (a)

Industry	Number of employees ('000), February 1994					Percentage distribution	
	Private	Public	Private and public			Feb. 1992	Feb. 1994
			Males	Females	Persons		
Agriculture, forestry, fishing and hunting	n.a.	0.7	n.a.	n.a.	n.a.	n.a.	n.a.
Mining	2.0	—	1.9	0.1	2.0	1.4	1.4
Manufacturing	18.0	0.1	13.5	4.6	18.1	16.8	13.0
Electricity, gas and water, construction	5.3	4.3	8.1	1.4	9.6	7.4	6.9
Wholesale and retail trade	27.4	—	15.6	11.9	27.4	19.0	19.7
Transport and storage	3.8	2.0	4.4	1.5	5.9	4.3	4.2
Communication	—	2.2	1.7	0.5	2.2	1.7	1.6
Finance, property and business services	10.2	0.9	4.8	6.4	11.2	9.1	8.1
Public administration and defence	—	8.5	5.3	3.3	8.5	7.4	6.1
Community services	16.9	24.7	15.6	26.1	41.7	24.3	30.0
Recreation, personal and other services	11.1	0.6	4.3	7.4	11.7	8.1	8.4
Total all industries	94.8	44.1	75.6	63.3	138.9	100.0	100.0

(a) For explanation of terms and concepts, refer to *Employed Wage and Salary Earners, Australia* (Catalogue No. 6248.0).

**EMPLOYED WAGE AND SALARY EARNERS:
TRANSPORT AND STORAGE INDUSTRIES
Tasmania**



Employment and Unemployment

Table 10. Average hours worked, Tasmania

Month	Average weekly total hours worked, all employed persons (a)			Average weekly overtime hours (b)		Percentage of employees working overtime (b)
	Males	Females	Persons	Per employee	Per employee working overtime	
1991 —						
August	38.4	27.9	34.0	1.0	6.8	14.6
1993 —						
August	38.8	27.8	34.1	0.8	6.3	13.2
November	38.2	26.4	33.1	1.0	6.9	14.3
1994						
February	37.6	25.8	32.7	1.0	6.9	14.0
May	39.4	27.2	34.2	0.9	6.4	13.9
August	39.4	26.9	34.1	1.0	6.5	15.6

(a) For explanation of terms and concepts, refer to *The Labour Force, Australia*. (Catalogue No. 6203.0). (b) For explanation of terms and concepts, refer to *Job Vacancies and Overtime, Australia* (Catalogue No. 6354.0).

Table 11. Job vacancies, Tasmania (a)

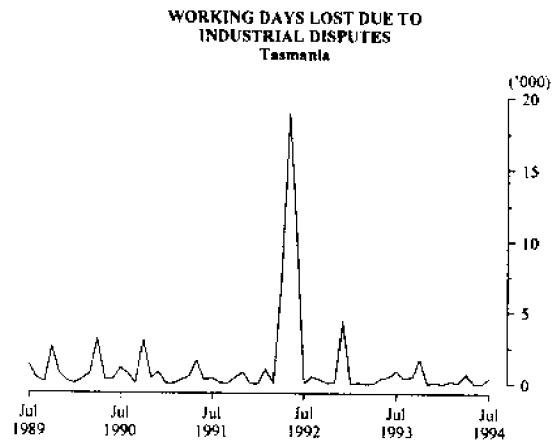
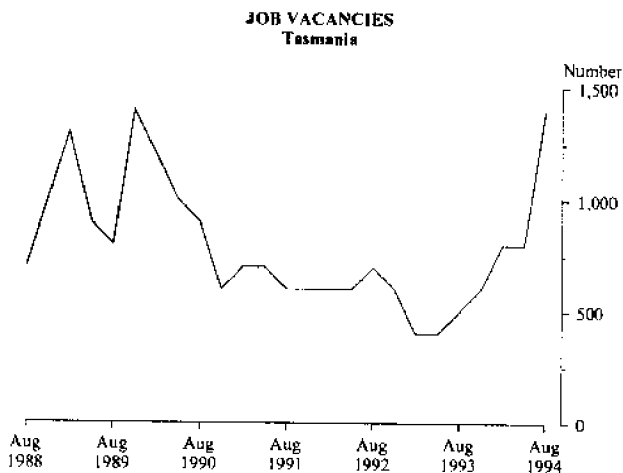
Period	Job Vacancies	
	Number	Rate (b) (%)
1991 —		
August	600	0.4
1993		
August	500	0.4
November	600	0.4
1994 —		
February	800	0.6
May	800	0.5
August	1 400	0.9

(a) For explanation of terms and concepts refer to *Job Vacancies and Overtime, Australia* (Catalogue No. 6354.0). (b) Job vacancies are expressed as a percentage of the number of job vacancies divided by the number of employees plus job vacancies.

Table 12. Industrial disputes, Tasmania (a)

Month	Working days lost	Twelve months ending	Working days lost per thousand employees
1993 —		1993 —	
September	500	September	47
October	1 700	October	57
November	0	November	56
December	100	December	29
1994 —		1994 —	
January	0	January	31
February	200	February	30
March	100	March	30
April	700	April	35
May	0	May	33
June	0	June	30
July	400	July	27
Twelve months ended 1994 —			
July	4 000		

(a) For explanation of terms and concepts, refer to *Industrial Disputes, Australia* (Catalogue No. 6321.0).



Wages and Prices

Table 13. Average weekly earnings of employees, Tasmania (a) (\$)

Quarter	Survey reference period	Males			Females			Persons		
		Full-time adults		All	Full-time adults		All	Full-time adults		All
		Weekly ordinary time earnings	Weekly total earnings	Weekly total earnings	Weekly ordinary time earnings	Weekly total earnings	Weekly total earnings	Weekly ordinary time earnings	Weekly total earnings	Weekly total earnings
1991 - June	17 May	563.60	593.50	535.80	477.90	484.50	357.10	536.30	558.80	457.50
1993 - June	21 May	602.70	640.10	576.10	503.70	512.60	379.10	570.60	598.80	486.20
1993 - December	19 November	624.40	659.30	599.50	518.90	525.30	391.60	588.30	613.50	501.70
1994 - March	18 February	627.60	671.60	615.20	523.50	534.70	386.70	592.90	626.00	506.70
1994 - June	20 May	621.80	662.40	602.40	526.40	537.20	387.50	589.00	619.30	499.30

(a) For explanation of terms and concepts, refer to *Average Weekly Earnings, States and Australia* (Catalogue No. 6302.2).

Table 14. Weekly award rates of pay indexes, full-time adult employees Tasmania (a)

(Base: June 1985 = 100.0)

Industry	1991	1993	1994		
	Aug	Aug	Jun	Jul	Aug
Mining	133.6	137.7	137.7	137.7	137.7
Manufacturing	137.7	145.0	146.9	146.9	146.9
Electricity, gas and water	130.6	131.9	132.0	132.0	132.0
Construction	139.6	141.3	142.6	142.6	142.6
Wholesale trade	132.8	137.6	140.0	140.0	140.0
Retail trade	130.6	136.6	139.6	139.6	139.6
Transport and storage	136.4	137.9	138.9	138.9	138.9
Communication	135.4	135.4	135.4	135.4	135.4
Finance, property and business services	132.1	137.4	137.8	137.8	137.8
Public admin. and defence	132.9	147.7	148.3	148.3	148.3
Community services	136.4	140.3	140.8	140.9	140.9
Recreation, personal and other services	139.8	146.4	149.2	150.2	150.2
Total all industries	135.1	140.5	141.6	141.6	141.6

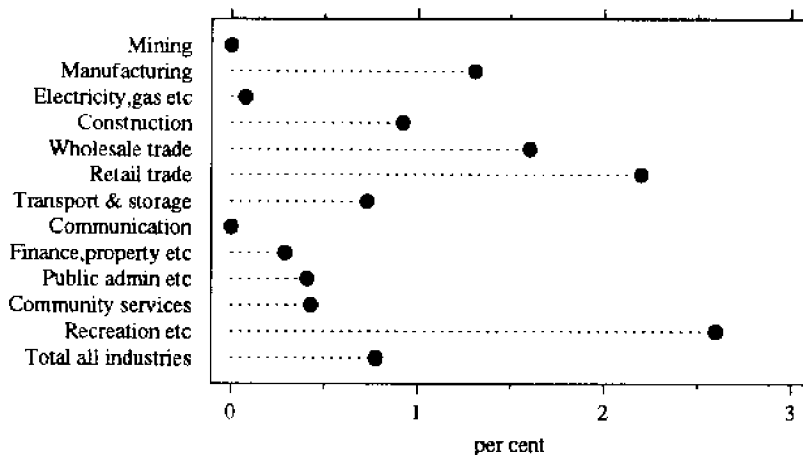
(a) For explanation of terms and concepts, refer to *Award Rates of Pay Indexes, Australia* (Catalogue No 6312.0).- AWARD RATES OF PAY INDEX: TASMANIA
Annual Change to August 1994

Table 15. Summary of annual movements in wages and prices, Tasmania

Period	CPI. All groups Hobart	Price index of materials used in house building. All groups. Hobart	Price index of materials used in building other than house building. All groups. Hobart	Average weekly total earnings, full-time adult employees	Weekly award rates of pay index, full-time adult employees
1991 —					
June	3.8	4.3	3.5	..	2.1
1993 —					
June	2.2	1.0	1.4	..	0.4
1994 —					
January	..	2.7	1.8	..	1.5
February	..	2.4	1.7	4.4	1.7
March	2.6	3.1	0.5	..	1.7
April	..	3.0	1.1	..	1.7
May	..	p 3.3	p 0.9	3.4	1.7
June	2.7	p 3.7	p 1.1	..	1.7
July	..	p 2.8	p 0.7	..	1.8
August	..	p 3.3	p 0.7	n.a.	..

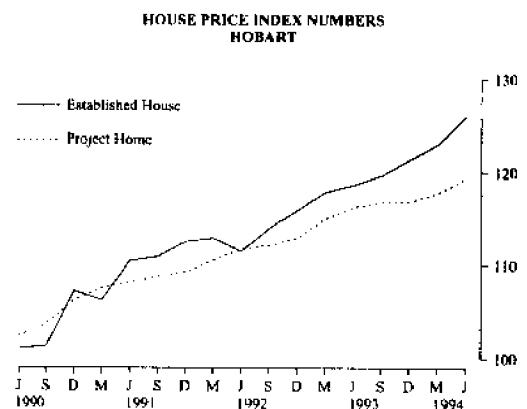
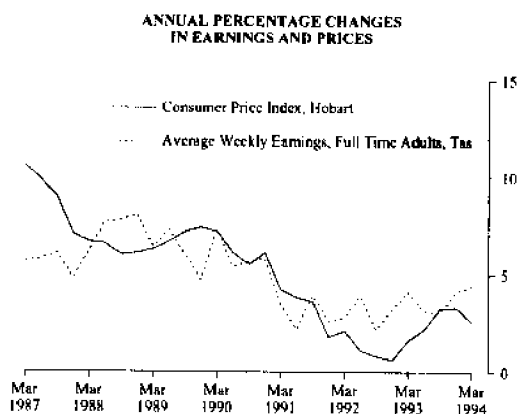
Table 16. House price index numbers (a), Hobart

(Base of each Index: 1989-90 = 100.0)

	Established house price index		Project home price index	
	Index	% change (b)	Index	% change (b)
1991-92	112.0	5.4	110.1	3.5
1992-93	116.6	4.1	114.1	3.6
1993-94	122.5	5.1	117.7	3.2
1991 —				
June	110.4	4.0	108.1	0.6
1993 —				
March	117.9	1.7	115.0	1.9
June	118.7	0.7	116.3	1.1
September	119.7	0.8	116.8	0.4
December	121.4	1.4	116.9	0.1
1994 —				
March	123.0	1.3	117.8	0.8
June	126.0	2.4	119.4	1.4

(a) Used in calculating the mortgage interest charges component of the Consumer Price Index.

(b) Percentage change over previous period.



Wages and Prices

Table 17. Consumer price index: Hobart & eight capital cities combined (a)

(Base of each index: year 1989-90 = 100.0) (b)

Year or quarter	Hobart					
	Food	Clothing	Housing (c)	Household equipment and operation	Transportation	Tobacco and alcohol
1991-92	106.1	105.7	98.8	109.1	106.9	111.5
1992-93	108.2	106.9	94.9	110.3	110.3	115.8
1993-94	111.7	106.6	94.0	111.9	112.2	133.7
Quarter						
1991 —						
June	104.4	106.3	102.6	107.0	105.1	108.6
1993 —						
June	109.1	107.7	95.0	110.4	111.7	119.9
September	110.2	106.9	94.9	111.3	111.6	132.1
December	111.7	106.8	93.4	111.8	112.3	133.4
1994 —						
March	112.6	106.4	93.3	112.2	111.9	134.3
June	112.2	106.4	94.2	112.4	112.8	134.8
Percentage change between June quarter 1993 and June quarter 1994						
	+ 2.8	- 1.2	- 0.8	+ 1.8	+ 1.0	+ 12.4

Table 17. Consumer price index: Hobart & eight capital cities combined (a) (b) — *continued* (Base of each index: year 1989-90 = 100.0)

Year or quarter	Hobart				Weighted average of eight capital cities (c)	
	Health and personal care	Recreation and education	All groups		Index	Percentage change over previous period
			Index	Percentage change over previous period		
1991-92	122.7	106.1	107.1	+ 2.1	107.3	+ 1.9
1992-93	127.3	108.0	108.5	+ 1.3	108.4	+ 1.0
1993-94	136.1	110.2	111.7	+ 2.9	110.4	+ 1.8
Quarter						
1991 --						
June	117.7	102.4	105.8	+ 0.6	106.0	+ 0.2
1993 ...						
June	129.3	108.2	109.4	+ 0.3	109.3	+ 0.4
September	134.5	108.7	111.0	+ 1.5	109.8	+ 0.5
December	134.5	111.0	111.6	+ 0.5	110.0	+ 0.2
1994 —						
March	137.5	109.7	111.9	+ 0.3	110.4	+ 0.4
June	137.9	111.3	112.4	+ 0.4	111.2	+ 0.7
Percentage change between June quarter 1993 and June quarter 1994						
	+ 6.7	+ 2.9	+ 2.7	..	+ 1.7	..

(a) Further information on construction of CPI indexes is contained in the bulletin *The Australian Consumer Price Index Concepts, Sources and Methods* (Catalogue No. 6461.0). (b) The CPI is now published on a reference base of 1989-90 = 100.0. (c) Series from and including March 1989 has been affected by the change in treatment of mortgage interest charges.

Table 18. Price index of materials used in building other than house building: Hobart (Base year: 1989-90=100.0) (a)

Year or month	Index numbers for selected major building materials					
	Structural timber	Clay bricks	Ready mixed concrete	Precast concrete products	Steel decking, cladding etc.	Structural steel
1991-92	105.5	108.0	109.8	109.6	102.9	109.5
1992-93	108.2	111.9	113.4	109.9	104.2	111.7
1993-94 p	115.9	114.2	117.5	112.9	106.4	116.0
1991 —						
August	105.0	106.5	107.7	109.6	105.1	109.2
1993 —						
August	112.3	112.8	116.5	110.4	106.0	116.0
1994 —						
January	114.9	115.5	116.5	110.3	106.0	116.0
February	114.9	115.5	116.7	110.3	106.0	116.0
March	119.2	115.5	119.0	110.3	106.0	116.0
April	120.3	115.5	118.7	120.6	107.6	116.0
May p	120.3	115.5	119.4	120.6	107.7	116.0
June p	122.6	115.6	117.9	120.6	107.7	116.0
July p	123.4	115.6	119.6	120.6	107.7	116.0
August p	123.6	115.6	118.1	120.6	107.7	116.0
Percentage change between August 1993 and August 1994						
	+ 10.1	+2.5	+ 1.4	+ 9.2	+ 1.6	+ 0.0

Table 18. Price index of materials used in building other than house building: Hobart— *continued* (Base year: 1989-90 = 100.0) (a)

Year or month	Index numbers for selected major building materials						
	Reinforcing steel bar, fabric and mesh	Aluminium windows	Fabricated steel products (b)	Builders' hardware	Sand & aggregate	Paint & other coatings	Non-ferrous pipes & fittings
1991-92	108.0	98.7	105.2	111.9	123.6	112.3	111.9
1992-93	109.0	97.9	102.1	113.0	125.0	114.7	132.6
1993-94 p	109.1	100.5	106.6	115.7	129.6	114.1	133.1
1991 —							
August	105.9	98.7	105.1	110.8	123.6	110.5	110.3
1993 —							
August	110.4	101.9	107.7	115.2	129.3	114.0	127.5
1994 —							
January	109.2	101.9	105.9	116.1	129.3	114.0	131.0
February	109.2	103.2	106.1	115.6	129.3	114.0	129.8
March	108.0	98.6	106.1	117.0	129.3	114.0	129.8
April	107.9	96.9	106.1	117.5	129.7	114.1	132.9
May p	107.9	96.9	106.1	116.6	129.7	114.8	132.9
June p	107.9	97.6	106.1	116.9	132.7	114.8	162.9
July p	107.9	97.6	106.1	113.0	132.7	114.8	151.6
August p	107.3	99.6	106.1	111.1	132.7	116.5	155.4
Percentage change between August 1993 and August 1994							
	- 2.8	- 2.3	- 1.5	- 3.6	+ 2.6	+ 2.2	+ 21.9

(a) The Price Index of Materials Used in Building Other than House Building is now published on a reference base of 1989-90 = 100.0.

(b) Previously 'Steel windows, doors, louvres and other fabricated steelwork'.

Wages and Prices

Table 18. Price index of materials used in building other than house building: Hobart— *continued* (Base year: 1989–90 = 100.0) (a)

<i>Index numbers for special combination of building materials</i>						
<i>Period</i>	<i>All electrical materials</i>		<i>All mechanical services</i>		<i>All plumbing materials</i>	
	<i>Index</i>	<i>% change over previous period</i>	<i>Index</i>	<i>% change over previous period</i>	<i>Index</i>	<i>% change over previous period</i>
1991–92	105.6	+ 2.3	107.5	+ 2.7	108.8	+ 3.3
1992–93	103.3	2.2	108.1	+ 0.6	111.4	+ 2.4
1993–94 p	104.7	+ 1.4	109.6	+ 1.4	110.1	– 1.2
1991 —						
August	107.5	+ 0.4	107.6	– 0.3	108.7	– 0.1
1993 —						
August	105.3	—	108.0	+ 0.1	110.0	– 0.3
1994 —						
January	104.6	+ 1.0	110.0	—	109.3	+ 0.6
February	103.4	– 1.1	109.4	0.5	107.8	– 1.4
March	103.2	– 0.2	109.6	+ 0.2	107.8	—
April p	105.0	+ 1.7	109.8	+ 0.2	109.5	+ 1.6
May p	105.1	+ 0.1	109.7	– 0.1	110.3	+ 0.7
June p	105.9	+ 0.8	111.0	+ 1.2	120.2	+ 9.0
July p	106.5	+ 0.6	110.8	– 0.2	116.2	– 3.3
August p	106.9	+ 0.4	111.0	+ 0.2	118.1	+ 1.6
Percentage change between August 1993 and August 1994						
	..	+ 1.5	..	+ 2.8	..	+ 7.4

Table 18. Price index of materials used in building other than house building: Hobart— *continued* (Base year: 1989–90 = 100.0) (a)

<i>Index numbers for special combinations of building materials</i>					
<i>Period</i>	<i>All groups excluding electrical materials and mechanical services</i>			<i>All groups</i>	
	<i>Index</i>	<i>% change over previous period</i>	<i>Index</i>	<i>Index</i>	<i>% change over previous period</i>
1991–92	107.2	+ 3.3	107.1		+ 3.1
1992–93	109.1	+ 1.8	108.2		+ 1.1
1993–94 p	111.0	+ 1.8	110.1		+ 1.8
1991 —					
August	106.4	+ 0.6	106.0		– 0.2
1993 —					
August	111.2	—	110.1		+ 0.1
1994 —					
January	111.3	+ 0.1	110.3		+ 0.1
February	111.3	—	110.1		– 0.2
March	109.7	– 1.4	108.9		– 1.1
April	110.7	+ 0.9	109.8		+ 0.8
May p	110.9	+ 0.2	110.0		+ 0.2
June p	111.3	+ 0.4	110.5		+ 0.5
July p	111.6	+ 0.3	110.8		+ 0.3
August p	111.6	—	110.9		+ 0.1
Percentage change between August 1993 and August 1994					
	..	+ 0.4	..		+ 0.7

(a) The Price Index of Materials Used in Building Other than House Building is now published on a reference base of 1989–90 = 100.0.

Table 19. Miscellaneous indicators of production, Tasmania

Year or month	Dairy products (a)			Staff-hours worked (b)	
	Whole milk (e) (million litres)	Factory butter (f) (tonnes)	Factory cheese (tonnes)	Textile manufacturing (g) (^{'000})	Vegetable preserving (^{'000})
1991-92	371.9	5 589	20 022	1 549	2 068
1992-93	412.9	6 287	20 043	1 740	1 915
1993-94	447.3	7 846	22 686	1 575	2 002
1991 — July	8.0	216	151	154	166
1993 — July	9.2	204	400	162	182
1994 — May	23.2	428	1 234	161	201
June	11.7	227	684	145	164
July	10.2	n.y.a.	n.y.a.	148	153

Table 19. Miscellaneous indicators of production, Tasmania
— continued

Year or month	Ready-mixed concrete (c) (^{'000} m ³)	News-print (^{'000} tonnes)	Refined zinc (^{'000} tonnes)	Metal refin. index (d)	Chemical and fertilisers			
					Sulphuric acid (^{'000} tonnes)	Super phosphate (^{'000} tonnes)	Electricity (million kW.h)	Gas (^{'000} MJ)
1991-92	245.6	202.8	206.0	110.0	359.1	75.9	8 967	63 377
1992-93	254.4	228.4	212.0	109.4	355.5	74.6	8 864	61 432
1993-94	262.5	208.9	193.8	105.5	362.0	74.4	8 855	55 767
1991 — July	23.7	15.4	18.4	106.9	34.0	(h) 1.9	846	7 669
1993 — July	18.8	19.6	18.2	115.8	35.6	(h) ..	827	6 548
1994 — May	23.5	16.9	18.1	100.2	26.5	8.7	766	5 965
June	23.4	16.8	17.3	97.8	26.6	5.3	761	5 871
July	20.4	n.y.a.	17.7	103.4	30.3	3.5	810	6 476

(a) Source: Australian Dairy Corporation. (b) Changing productivity per staff-hour makes these indicators unsatisfactory for long-term comparisons. (c) For sale as such; excludes production for use within the same enterprise. (d) *Metallurgical refining index* (Base: 1979-80 = 100.0) Output from selected establishments covering the smelting and refining of ferro-alloys, zinc and aluminium. The weighting pattern is based on the establishments' value added as derived from the 1979-80 Manufacturing Census. For multi-product establishments, value added was apportioned to products on the basis of gross receipts from each product. (e) Includes the whole milk equivalent of farm cream intake. (f) Includes butter equivalent of butter oil. (g) Includes spinning, weaving and carpetmaking. Reported by establishments which manufacture textiles only, or manufacture clothing and textiles in the one plant. (h) Production low due to annual close-down.

Production

Table 20. Livestock slaughtering, Tasmania: numbers ('000)

Year or month	Cattle					
	Bulls, bullocks and steers	Cows and heifers	Calves	Sheep	Lambs	Pigs
1991-92	104.7	93.6	32.3	446.7	489.8	84.8
1992-93	99.0	90.4	32.7	473.4	456.5	92.5
1993-94 p	101.8	85.2	23.2	526.1	437.8	95.8
1991 —						
August	7.7	4.2	10.8	13.3	41.1	8.6
1993 —						
August	6.2	4.5	7.5	18.5	25.2	6.9
September	6.0	5.1	10.8	30.9	27.7	8.1
October	7.7	6.4	2.7	31.1	30.0	6.4
November	7.7	7.3	0.3	39.7	32.0	7.9
December	9.8	8.4	0.1	46.0	39.6	11.2
1994 —						
January p	8.7	6.1	0.1	50.1	34.1	6.6
February p	7.6	6.9	0.1	60.4	38.1	6.6
March p	11.4	8.1	0.1	68.6	49.0	8.2
April p	9.5	8.3	0.2	41.3	37.6	7.5
May p	9.5	9.1	0.2	49.6	38.7	7.8
June p	8.8	7.5	0.4	55.3	52.6	9.9
July p	6.4	5.3	1.4	31.7	39.3	7.6
August p	5.8	4.3	8.4	20.9	36.9	7.2

Table 21. Livestock slaughtering, Tasmania: Seasonally adjusted and trend series

Month	Seasonally adjusted			Trend series (a)		
	Cattle and calves	Sheep and lambs	Pigs	Cattle and calves	Sheep and lambs	Pigs
1991 —						
August	21 168	78 391	7 999	18 018	78 244	6 797
1993 —						
August	16 846	76 050	7 286	17 865	84 817	7 748
September	19 298	99 372	8 355	18 219	84 413	7 725
October	18 541	84 927	6 443	18 424	82 784	7 810
November	16 861	73 652	8 017	18 404	80 419	7 939
December	21 006	77 950	8 711	18 127	77 139	8 004
1994 —						
January	16 899	69 764	8 653	17 759	74 492	8 024
February	15 688	76 627	7 679	17 331	73 905	7 990
March	17 716	85 883	7 512	16 908	76 361	7 912
April	16 493	65 114	7 361	16 557	81 251	7 840
May	16 510	77 913	7 944	16 261	87 020	7 826
June	17 095	115 865	8 709	16 041	93 122	7 854
July	13 316	91 693	7 653	15 897	98 976	7 862
August	17 070	106 612	7 502	15 766	103 623	7 884

(a) Trend estimates may be revised as data for later months become available.

Table 22. Meat production, Tasmania

(tonnes)

Year or month	Meat (carcass weight)					
	Beef	Veal	Mutton	Lamb	Pigmeat (a)	Total
1991-92	45 266	665	8 355	8 070	5 168	67 524
1992-93	44 925	692	8 949	7 456	5 749	67 770
1993-94 p	47 458	515	9 992	7 047	6 019	71 031
1991 —						
August	2 649	222	235	668	530	4 304
1993 —						
August	2 566	161	343	401	417	3 888
September	2 621	235	570	441	493	4 359
October	3 520	60	577	479	384	5 020
November	3 780	6	759	506	480	5 531
December	4 555	2	874	635	686	6 752
1994 —						
January p	3 966	1	959	550	414	5 891
February p	3 784	1	1 208	586	411	5 990
March p	5 117	3	1 317	804	514	7 754
April p	4 537	5	784	616	477	6 419
May p	4 970	8	929	634	470	7 011
June p	3 962	10	1 030	864	728	6 594
July p	2 789	39	628	715	334	4 505
August p	2 449	207	415	686	514	4 272

(a) Includes pork used for production of bacon and ham.

Table 23. Principal mineral concentrates produced, Tasmania

(Source: Tasmanian Development and Resources)

('000 tonnes)

Year or quarter	Concentrate								
	Copper	Iron (pellets)	Iron pyrite	Lead	Lead-copper	Lead-zinc	Tin	Tungsten	Zinc
1990-91	84.3	1 488.7	58.7	74.5	13.1	66.5	10.6	1.4	294.0
1991-92	97.4	1 451.6	80.2	86.2	5.5	84.9	10.7	0.5	335.0
1992-93	107.6	1 458.9	94.5	90.7	1.2	69.5	12.1	0.0	454.3
1990 —									
June	15.9	598.7	16.8	11.9	8.5	7.6	4.4	0.6	62.9
1991 —									
December	25.8	399.8	17.9	18.8	1.3	22.7	2.5	0.1	78.3
1992 —									
March	21.4	294.8	20.6	23.4	0.8	24.4	2.3	0.1	93.8
June	22.7	388.3	20.9	18.8	1.9	15.0	3.0	0.1	71.5
September	25.1	385.8	20.4	27.5	1.2	18.2	3.5	0.0	126.0
December	26.5	386.5	24.3	18.3	0.0	11.4	2.9	0.0	117.3
1993 —									
March	26.4	305.0	23.4	22.5	0.0	17.9	2.3	0.0	128.0
June	29.7	381.6	26.4	22.4	0.0	22.0	3.4	0.0	83.0

Production

Table 24. Sawmills and plywood mills: Logs delivered and timber produced, Tasmania ('000 m³)

Year or quarter	Tasmanian-grown logs delivered					Sawn, peeled and sliced timber produced (a)				
	Hardwoods		Softwoods			Hardwoods		Softwoods		
	Eucalypts	Other hardwoods (b)	Plantation (c)	Natives (d)	Total	Eucalypts	Other hardwoods (b)	Plantation (c)	Natives (d)	Total
1991-92	470.4	8.6	325.0	1.6	805.6	162.8	3.7	130.1	0.4	297.1
1992-93	554.5	13.0	312.8	2.8	883.2	188.9	2.9	131.6	0.7	324.1
1993-94	572.2	15.3	299.2	1.5	888.1	200.2	3.1	141.1	0.5	344.8
1992 ---										
June	132.0	1.9	83.5	0.2	217.7	44.2	0.6	33.0	0.1	78.0
September	129.2	2.9	90.6	1.9	224.7	48.7	0.7	38.2	0.3	88.0
December	133.1	2.1	81.0	0.2	216.5	46.9	0.7	33.7	0.2	81.5
1993 ---										
March	125.9	3.9	72.9	0.3	203.0	41.4	0.7	30.6	0.1	72.7
June	166.3	4.1	68.3	0.3	239.0	52.0	0.8	29.0	0.1	81.9
September	158.9	2.0	75.6	0.4	236.9	53.5	0.7	33.8	0.1	88.1
December	129.8	3.8	70.3	0.3	204.2	49.5	0.7	35.1	0.1	85.5
1994 ---										
March	137.2	5.0	77.3	0.4	219.8	45.7	0.6	38.1	0.1	84.5
June	146.3	4.5	76.0	0.4	227.2	51.3	1.1	34.1	0.2	86.7

(a) Includes plywood, veneer and sliced timber production converted to an equivalent cubic measurement. (b) Includes blackwood, myrtle, sassafras etc. (c) Radiata pine. (d) Includes Huon pine, celery top pine and King William pine.

Table 25. Chipping and grinding of wood (a), Tasmania

Year or quarter	Producing locations (no.) (b)	Materials used ('000 m ³) (c)			Chipped and ground wood production ('000 tonnes green weight)
		Logs delivered (d)	Sawmill offcuts		
1991-92	33	3 173.1	283.8	3 356.0	
1992-93	31	3 350.6	295.8	3 565.8	
1993-94	30	3 448.8	339.8	3 726.1	
1992 ---					
June	33	647.7	74.5	682.7	
September	32	886.9	82.6	957.9	
December	32	756.0	75.1	820.6	
1993 ---					
March	31	805.0	62.2	826.7	
June	30	902.7	76.0	960.6	
September	31	970.4	88.3	1 027.9	
December	31	818.5	96.9	885.8	
1994 ---					
March	31	818.3	71.3	868.3	
June	30	841.6	83.3	944.0	

(a) Both hardwoods and softwoods, separate details are not available. (b) Capable of producing at end of year or actually producing during quarter. (c) Data reported by weight, converted to cubic measure by the factor 0.95 m³ per tonne. (d) Includes log equivalent of limbwood and billets.

Table 26. Logs delivered for milling or chipping, Tasmania ('000 m³)

Year or quarter	Sawmilling and plywood milling			Chipping and grinding (a)			Total		
	Crown land (b)	Private land	Total	Crown land (b)	Private land	Total	Crown land (b)	Private land	Total
1991-92	608.5	197.1	805.6	1 757.2	1 415.9	3 173.1	2 365.7	1 613.0	3 978.7
1992-93	698.9	184.3	883.2	1 753.4	1 597.2	3 350.6	2 452.3	1 781.5	4 233.7
1993-94	691.6	196.6	888.1	1 697.0	1 751.8	3 448.8	2 388.8	1 948.4	4 336.9
1992 ---									
June	167.1	50.6	217.7	379.9	267.8	647.7	547.0	318.4	865.4
September	183.2	41.4	224.7	434.9	452.0	886.9	618.2	493.4	1 111.6
December	173.2	43.3	216.5	408.0	348.0	756.0	581.2	391.2	972.5
1993 ---									
March	150.6	52.4	203.0	437.1	367.9	805.0	587.8	420.3	1 008.0
June	191.8	47.2	239.0	473.3	429.4	902.7	665.1	476.6	1 141.7
September	180.3	56.5	236.9	488.1	482.2	970.4	668.5	538.7	1 207.2
December	160.6	43.6	204.2	417.5	401.0	818.5	578.1	444.6	1 022.8
1994 ---									
March	169.7	50.1	219.8	393.7	424.6	818.3	563.4	474.7	1 038.1
June	180.9	46.4	227.2	397.7	443.9	841.6	578.6	490.3	1 068.8

(a) Logs used are generally below sawmilling standard; includes log equivalent of limbwood and billets. (b) Comprises all areas (including concession areas) from which royalties are payable to the Forestry Commission.

Table 27. Building approvals, Tasmania

Year or month	New residential building			Value of alterations and additions (a) to residential building (\$'000)	Value of non-residential building (b)		Total value of building (\$'000)
	No. of houses	No. of other residential buildings (c)	Total no. of dwelling units		Private (\$'000)	Total (\$'000)	
1991-92	2 869	1 034	3 903	260 296	32 637	68 980	398 873
1992-93	2 956	1 138	4 094	275 262	33 050	62 416	411 419
1993-94	3 113	1 034	4 147	301 963	39 522	81 251	487 407
1991— August	280	110	390	27 509	2 447	6 386	43 973
1993 — August	264	119	383	27 019	2 704	5 519	37 624
1994 — May	271	77	348	24 627	4 337	6 555	42 228
June	241	65	306	23 327	3 098	7 519	38 037
July	212	97	309	20 883	3 213	6 161	31 217
August	257	34	291	23 162	3 454	11 251	38 643

(a) Valued at \$10 000 and over. (b) Comprises non-residential building (new plus alterations and additions) valued at \$30 000 and over from July 1988, and valued at \$50 000 and over from July 1990. Previous figures are for values of \$10 000 and over. (c) New individual dwelling units (e.g. flats, home units and villa units).

VALUE OF BUILDING APPROVALS
Tasmania

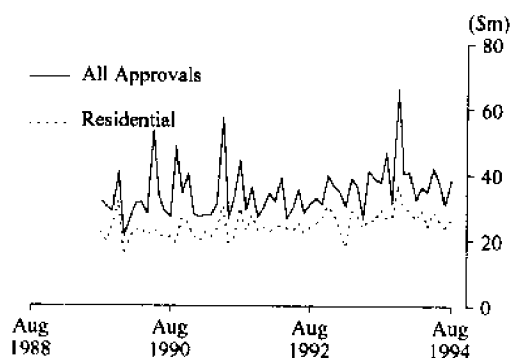


Table 28. Dwelling commencements, Tasmania

Year or month	New residential building						Total no. of dwelling units
	No. of houses						
	Double brick	Brick veneer	Fibre cement	Timber	Other and not stated	Total houses	
1991-92	238	1 866	67	500	78	2 749	3 773
1992-93	277	1 933	103	447	65	2 825	3 954
1993-94	306	2 120	103	441	79	3 049	4 022
1991 — July	17	133	4	53	5	212	282
1993 — July	28	142	5	34	1	210	287
1994 — April	22	164	9	32	8	235	274
May	28	174	10	24	6	242	315
June	22	192	14	31	9	268	345
July	15	168	9	25	9	226	313

(a) New individual dwelling units (e.g. flats, home units and villa units).

Table 29. Banking statistics, Tasmania (a) (b) (\$m)

Month	Deposits				Statement savings accounts
	Current bearing interest	Current – not bearing interest	Fixed	Investment savings accounts	
1993 —					
November	476	311	1 210	602	200
December	533	308	1 223	603	200
1994 —					
January	526	301	1 213	605	198
February	516	292	1 231	605	196
March	520	309	1 204	600	193
April	512	319	1 194	604	195
May	509	301	1 208	605	196
June	514	303	1 232	609	197
July	519	310	1 256	614	199
August	516	304	1 346	616	199

Table 29. Banking statistics, Tasmania (a) (b) — continued (\$m)

Month	Deposits — continued			Loans (c)
	Passbook/School savings accounts	Other	Total	
1993 —				
November	271	162	3 233	3 560
December	266	162	3 294	3 596
1994 —				
January	263	159	3 265	3 585
February	261	160	3 261	3 629
March	256	162	3 244	3 646
April	256	161	3 242	3 673
May	253	158	3 230	3 718
June	251	157	3 263	3 841
July	249	150	3 297	3 872
August	244	152	3 375	3 886

(a) Due to changes to the *Banking Act 1959* in December 1989, which removed the distinction between trading and savings banks, figures previously published in this table are no longer comparable with those shown above. (b) Details are the averages of weekly figures for each month. The figures are derived from returns submitted by banks authorised under the *Banking Act* together with similar returns voluntarily submitted by the State banks; they exclude the Reserve Bank. (c) Excludes non-resident loans.

Table 30. Private new capital expenditure by type of asset, Tasmania (a) (\$m)

Year or quarter	New buildings and structures	Equipment, plant, and machinery	Total
1988–89	182	592	774
1989–90	88	487	575
1990–91	180	416	596
1991–92	79	359	438
1992–93	103	340	443
1992 —			
December	17	122	139
1993 —			
March	35	58	93
June	35	88	123
September	17	76	94
December	14	71	85
1994 —			
March	12	42	54

(a) Estimates based on a sample survey and therefore subject to sampling variability. Covers selected industries only — mining, manufacturing, finance, property and other selected industries.

Table 31. Passenger arrivals and departures, Tasmania (a)

(Source: Department of Tourism, Sport & Recreation)

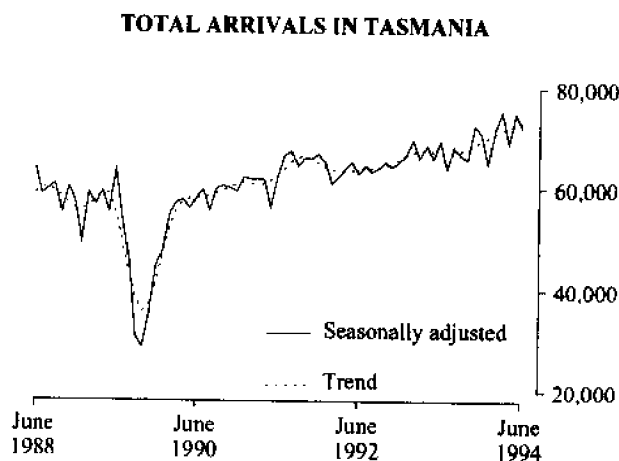
Period	Arrivals				Total departures (b)	Cruise ships	
	By air			Total		Arrivals	Departures
	Interstate	Inter-national	By sea				
1990	555 631	8 629	120 004	684 264	679 833	3 255	3 255
1991	625 366	5 897	131 375	762 638	764 731	6 720	6 663
1992	652 092	4 428	114 969	771 489	761 109	4 608	4 608
1993	694 244	5 144	115 381	814 769	814 835	2 033	2 033
1993 —							
June	51 154	258	6 067	57 479	54 776	—	—
1994 —							
April	62 519	502	11 732	74 753	78 095	—	—
May	50 076	242	8 151	58 469	70 924	—	—
June	52 737	167	7 629	60 533	56 244	—	—

(a) The following persons are not included in these statistics: passengers under three years of age accompanied by an adult; passengers travelling on chartered flights with minor carriers; passengers travelling on private or VIP flights; and passengers from or departing for overseas other than direct flights to New Zealand. (b) The proportion of departing passengers who were visitors was shown to be about 58 per cent in the 1981 Tasmanian Visitor Survey, 55 per cent in the 1984 Tasmanian Visitor Survey, about 53 per cent in the 1986 Tasmanian Visitor Survey, almost 65 per cent in the 1990 Tasmanian Visitor Survey, and just over 58 per cent in the 1993 Tasmanian Visitor Survey.

Table 32. Total passenger arrivals by air and sea into Tasmania

Period	Original	Seasonally adjusted (a)	Trend
1993 —			
June	57 479	r 59 510	r 66 870
1994 —			
April	74 753	r 68 991	r 72 317
May	58 469	r 75 071	r 72 774
June	60 533	r 72 090	r 73 314

(a) There is an annual recalculation of seasonal adjustment factors to include the most recent year's arrivals. This occurs at the end of each financial year and may cause revisions to previously published seasonally adjusted and trend figures. A full time series of seasonally adjusted and trend series from January 1971 is available on request telephone (002) 20 5870.



Source: Dept. of Tourism, Sport & Recreation

Table 33. Accommodation statistics, Tasmania

Hotels, motels, etc. with facilities

Period	Number of establishments	Guest rooms	Room nights		Room occupancy rate (%)	Takings from accommodation (\$'000)
			Seasonally adjusted	Trend estimates		
June quarter —						
1992	175	5 161		n.a.	43.4	14 296
1993	190	5 258			45.1	15 172
1994	177	5 322			51.2	17 799
1992 —						
April	n.a.	n.a.	74 019	73 233	52.0	5 734
May	n.a.	n.a.	75 080	73 490	42.6	4 837
June	175	5 161	73 150	73 820	35.5	3 725
1993 —						
April	n.a.	n.a.	77 560	80 298	53.1	5 981
May	n.a.	n.a.	81 426	79 416	44.9	5 094
June	190	5 258	77 305	78 817	37.4	4 097
1994 —						
April	n.a.	n.a.	92 122	88 821	61.1	6 948
May	n.a.	n.a.	93 587	89 448	52.8	6 451
June	177	5 322	84 327	89 627	39.5	4 399

Holiday units

Period	Number of establishments	Number of units	Unit nights		Unit occupancy rate (%)	Takings from accommodation (\$'000)
			Seasonally adjusted	Trend estimates		
June quarter —						
1992	45	731		n.a.	43.0	1 895
1993	45	735			46.1	1 992
1994	52	793			49.8	2 455
1992 —						
April	n.a.	n.a.	10 324	10 468	51.2	788
May	n.a.	n.a.	10 587	10 644	38.9	570
June	45	731	10 847	10 895	39.1	537
1993 —						
April	n.a.	n.a.	10 939	11 720	54.0	824
May	n.a.	n.a.	12 112	11 635	44.1	628
June	45	735	11 240	11 702	40.2	540
1994 —						
April	n.a.	n.a.	13 601	13 300	62.3	1 046
May	n.a.	n.a.	14 213	13 310	47.8	786
June	52	793	11 879	13 207	39.3	623

Caravan parks

Period	Number of establishments	Number of sites and cabins (a)	Site occupancy rate (b)	Takings from accommodation (\$'000)
June quarter —				
1992	67	6 251	15.8	1 325
1993	67	6 345	28.5	1 311
1994	70	6 708	28.1	1 435
1992 —				
April	n.a.	n.a.	21.0	632
May	n.a.	n.a.	14.0	381
June	67	6 251	12.6	312
1993 —				
April	n.a.	n.a.	33.2	572
May	n.a.	n.a.	26.6	392
June	67	6 345	25.7	347
1994 —				
April	n.a.	n.a.	32.9	648
May	n.a.	n.a.	26.3	428
June	70	6 708	25.2	359
of quarter.	in series It	1992.		

Table 34. Registrations of new motor vehicles (a), Tasmania

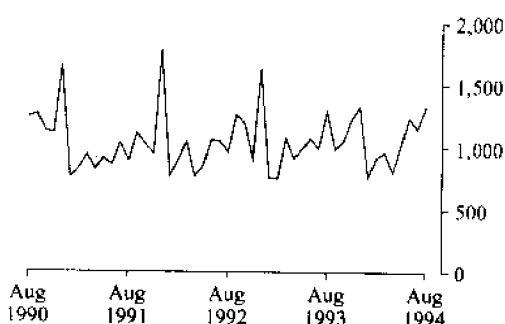
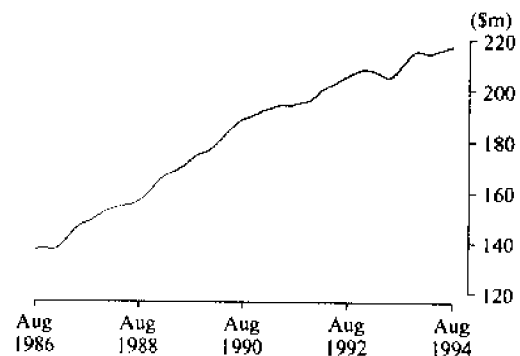
Year or month	Passenger vehicles	Other vehicles (b)	Motor cycles	Total
1991	9 572	2 395	394	12 361
1992	9 881	2 555	371	12 807
1993	10 019	2 478	440	12 937
1992 —				
August	786	182	37	968
1993 —				
September	798	187	31	1 016
October	883	182	29	1 094
November	1 027	206	43	1 276
December	1 128	205	86	1 419
1994 —				
January	623	143	25	791
February	734	195	38	967
March	729	238	32	999
April	591	215	30	836
May	743	274	28	1 045
June	860	383	25	1 268
July	944	208	29	1 181
August	1 089	242	33	1 364

(a) Includes State and Commonwealth Government-owned motor vehicles other than those belonging to the defence services. Excludes tractors, plant and equipment, caravans and trailers. (b) Comprises utilities, panel vans, rigid and articulated trucks and other truck-type vehicles (i.e. motor vehicles designed for purposes other than freight carrying, e.g. campervans, tow trucks, ambulances and hearses) and buses.

Table 35. Turnover of retail establishments at current prices, Tasmania

Period	Original (\$m)	Trend estimates (a)	
		(\$m)	% change from corresponding month of previous year
1992 — August	192.2	205.9	5.7
1993 — August	190.5	209.6	1.8
September	204.8	211.7	2.5
October	212.3	213.8	3.1
November	222.3	215.2	3.4
December	287.2	215.7	3.6
1994 — January	206.3	215.3	3.6
February	197.6	r 214.8	3.5
March	217.7	214.8	3.9
April	203.5	r 215.4	r 4.7
May	212.9	r 216.0	r 5.3
June	204.0	r 216.5	r 5.3
July	r 210.5	r 217.0	r 4.7
August	207.9	p 217.5	p 3.8

(a) Trend estimates revised each month.

REGISTRATIONS OF NEW MOTOR VEHICLES
TASMANIA, AUGUST 1994
(excluding motorcycles)RETAIL TURNOVER - TREND
Tasmania (a)

Major Statistical Indicators

Table 36. Major statistical indicators — Australia and State comparisons

	<i>NSW</i>	<i>Vic.</i>	<i>Qld</i>	<i>SA</i>	<i>WA</i>	<i>Tas.</i>	<i>Aust.(a)</i>
Population							
Estimated resident population, March 1994 ('000)	6 041.3	4 473.6	3 178.1	1 468.6	1 695.7	472.2	17 803.3
Proportion of Australian population, March 1994 (%)	33.9	25.1	17.9	8.2	9.5	2.7	100.0
Population growth rate, 12 months to March 1994 (%)	0.8	0.2	2.6	0.5	1.4	0.2	1.0
Labour Force							
Employment growth, 12 months to September 1994 (trend series) (%)							
Males	3.8	2.4	4.9	1.2	2.4	2.6	3.2
Females	3.2	3.7	6.4	3.5	5.4	1.0	4.1
Persons	3.5	3.0	5.5	2.2	3.7	1.9	3.6
Unemployment rate (trend series), September 1994 (%)	9.2	10.5	9.1	10.4	8.2	10.4	9.4
Unemployment growth, 12 months to September 1994 (trend series) (%)	- 12.6	- 15.9	- 13.4	- 0.9	- 8.1	- 19.5	- 12.6
Participation rate (trend series), September 1994 (%)	61.8	63.0	64.0	62.2	65.9	59.4	63.1
Average weekly overtime worked per employee, August 1994 (hours)	1.2	1.4	1.3	1.2	1.4	1.0	1.3
Job vacancy rate, August 1994 (%)	1.3	0.7	1.3	0.9	1.0	0.9	1.1
Working days lost through industrial disputes, 12 months to July 1994 (days per '000 employees)	92	92	140	36	46	27	88
Wages and Prices							
Average weekly total earnings, full-time adult employees (original series) May 1994 (\$)							
Males	730.0	698.5	671.9	664.3	717.0	662.4	705.9
Females	582.4	569.0	529.3	567.1	539.1	537.2	566.7
Persons	676.4	651.9	623.3	632.9	651.5	619.3	656.1
Average weekly total earnings, full-time adult employees, growth rate, 12 months to February 1994 (%)	4.6	1.6	4.6	2.8	1.0	4.4	3.3
Consumer price index, all groups, annual growth to June quarter 1994 (%)	1.5	1.7	1.6	1.9	2.2	2.7	1.7
Building							
Percentage change in the number of new residential dwelling units approved in twelve months ended August 1994, over the same period previous year	6.2	8.8	13.7	- 9.2	17.1	- 2.9	8.3
Finance and Retail Trade							
Percentage change in private new capital expenditure, twelve months ended March 1994, over the same period previous year	- 11.1	22.3	- 0.4	- 15.7	12.8	- 17.6	2.3
Percentage change in trend estimates turnover of retail establishments, August 1994 (change from corresponding month of the previous year)	9.2	7.4	8.3	5.6	6.3	3.8	8.1
Transport							
Percentage change in number of new motor vehicles (excluding motorcycles) registered twelve months ended August 1994, over the same period previous year	8.0	7.4	4.9	- 0.2	5.1	- 0.4	4.7
Agriculture							
Percentage change in the number of livestock slaughtered twelve months ended August 1994 over the same period previous year							
Cattle and calves	- 4.9	- 0.8	- 4.8	- 7.9	- 3.0	- 6.5	- 3.5
Sheep and lambs	8.6	- 3.1	- 23.8	12.9	- 15.0	5.7	- 0.1
Tourism							
Room occupancy rates for hotels, motels etc. with facilities, June quarter 1994 (%)	53.5	48.1	60.2	47.4	54.7	51.2	54.1
Australian National and State Accounts							
Percentage change in GSP (GDP) Trend Series							
March qtr 1994 to June qtr 1994	1.7	1.3	1.7	1.3	3.1	2.2	1.5
June qtr 1993 to June qtr 1994	6.1	3.9	6.5	5.1	8.9	5.1	5.5

(a) Australian totals include the ACT and NT.



For more information ...

The ABS publishes a wide range of statistics and other information on Australia's economic and social conditions. Details of what is available in various publications and other products can be found in the *ABS Catalogue of Publications and Products* available at all ABS Offices (see below for contact details).

Information Consultancy Service

Information tailored to special needs of clients can be obtained from the Information Consultancy Service available at ABS Offices (see Information Inquiries below for contact details).

National *Dial-a-Statistic* Line

0055 86 400

(Steadycom P/L: premium rate 25c/21.4 secs.)

This number gives 24-hour access, 365 days a year for a range of statistics.

Electronic Data Services

Selections of most frequently requested statistics are available, updated daily, on DISCOVERY (Key *656#). For more details on electronic data services available, contact Information Services in any of the ABS Offices (see Information Inquiries below for contact details).

Bookshops and Subscriptions

There are over 400 titles of various publications available from ABS bookshops in all ABS Offices (see below Bookshop Sales for contact details). The ABS also provides a subscription service through which nominated publications are provided by mail on a regular basis at no additional cost (telephone Publications Subscription Service toll free on 008 02 0608 Australia wide).

Sales and Inquiries

Regional Offices	Information Inquiries	Bookshop Sales
SYDNEY (02)	268 4611	268 4620
MELBOURNE (03)	615 7000	615 7829
BRISBANE (07)	222 6351	222 6350
PERTH (09)	323 5140	323 5307
ADELAIDE (08)	237 7100	237 7582
HOBART (002)	20 5800	20 5800
CANBERRA (06)	207 0326	207 0326
DARWIN (089)	43 2111	43 2111
National Office		
ACT (06)	252 6007	008 020 608

ABS Email Addresses

Keylink	STAT.INFO/ABS
X.400	(C:AU,A:TELMEMO,O:ABS,SN:INFO,FN:STAT)
Internet	STAT.INFO@ABS.TELEMEMO.AU



© Commonwealth of Australia 1994

Recommended retail price: \$10.00



2130360011946
ISSN 1034-1803